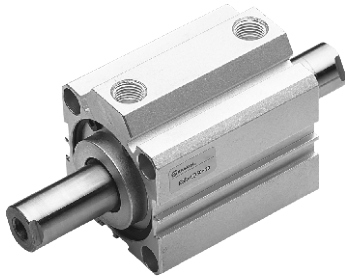
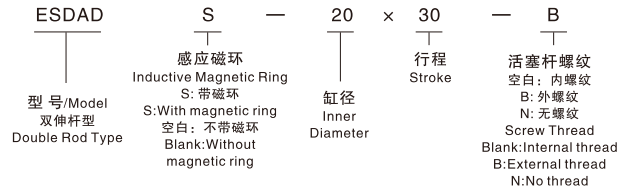


ESDAD薄型气缸(双伸杆型)



型号命名

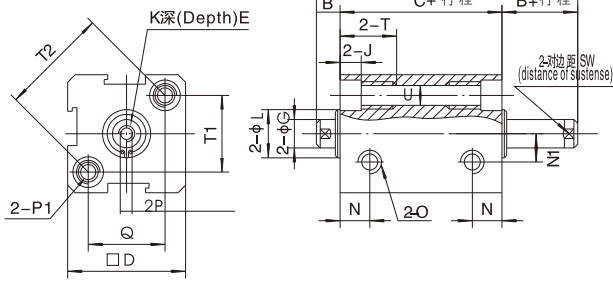


举例

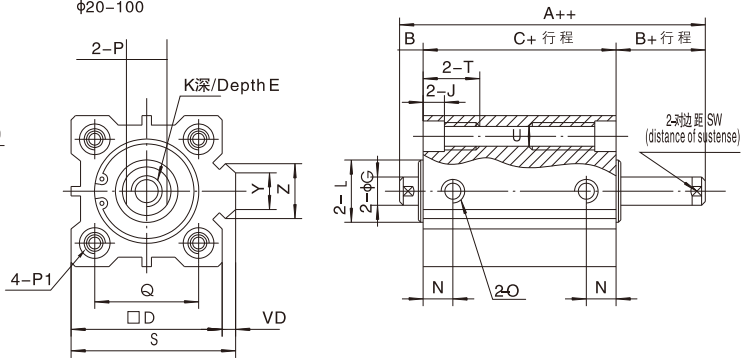
▲ 欲订购缸径为50mm, 行程为30mm, 带磁环, 活塞杆螺纹型式为外螺纹式的双伸杆薄型气缸, 其正确的订购码代号为: ESDADS - 50 x 30 - B

外形与安装尺寸

ESDAD
φ12-16



ESDADS
φ20-100



型式/ Type	不带磁环 Without magnetic ring		带磁环 S: With magnetic ring				E		O	H	I	U	
	符号 Code	A	C	A	C	B	D	行程/Stroke ≤ 10					行程/Stroke > 10
缸径 Inner Dia.													
12		37	27	37	27	5	25	6	6	M5 × 0.8	M5 × 0.8	6.5	4.2
16		39.5	28.5	39.5	28.5	5.5	29	6	6	M5 × 0.8	M5 × 0.8	6.5	4.2
20		40.5	29.5	40.5	29.5	5.5	34	7	8	M5 × 0.8	M5 × 0.8	6.5	4.2
25		43	31	43	31	6	40	7	10	M5 × 0.8	M6 × 1	8.2	4.6
32		48.5	34.5	48.5	34.5	7	44	8	12	G1/8	M6 × 1	8.2	4.6
40		50	36	50	36	7	52	9	12	G1/8	M8 × 1.25	10	6.5
50		56	38	56	38	9	62	11	15	G1/4	M8 × 1.25	11	6.5
63		60	42	60	42	9	75	11	15	G1/4	M8 × 1.25	11	6.5
80		73	51	73	51	11	94	14	23	G3/8	M12 × 1.75	14	9.2
100		85	61	85	61	12	114	18	23	G3/8	M14 × 2	17.5	11.3

缸径 Inner Dia.	符号 Code	K	Q	P	L	G	T	J	R	T2	N	N1	S
12	M3 × 0.5	16.2	5	10.2	6	12	4.5	-	23	6.3	6	-	
16	M3 × 0.5	19.8	5	11	6	12	4.5	-	28	7.3	6.5	-	
20	M4 × 0.7	24	6	15	8	14	4.5	10	-	7.5	-	36	
25	M5 × 0.8	28	8	17	10	15	5.5	10	-	8	-	42	
32	M6 × 1	34	10	22	12	16	5.5	15	-	9	-	50	
40	M8 × 1.25	40	14	28	16	20	7.5	16	-	10	-	58.5	
50	M10 × 1.5	48	17	38	20	25	8.5	20	-	10.5	-	71.5	
63	M10 × 1.5	60	17	40	20	25	8.5	20	-	11.8	-	84.5	
80	M14 × 1.5	74	22	45	25	25	10.5	26	-	14.5	-	104	
100	M18 × 1.5	90	22	55	25	30	13	26	-	18	-	124	