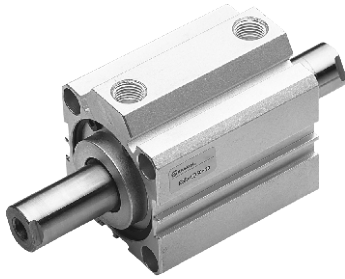
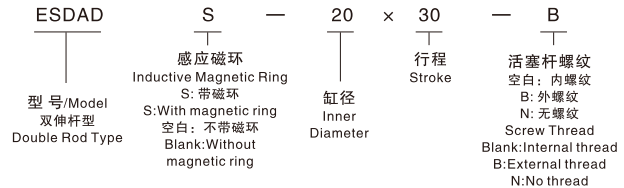


# Compact Cylinder(Double Rod Type)



## Product Code System

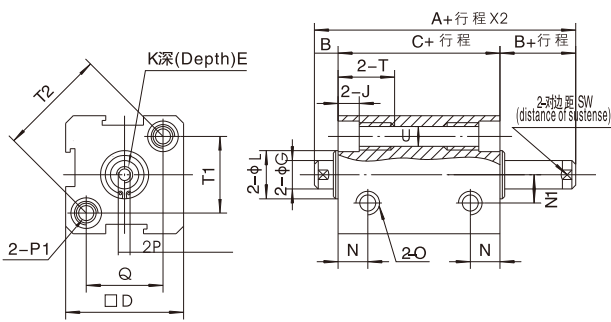


## Example

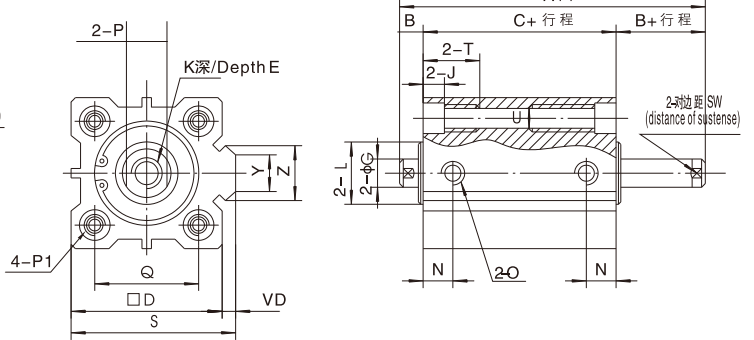
▲For order of the double acting compact cylinder which the inner diameter is 50mm , the stroke is 30mm ,the magnetic ring is attached to , the piston rod has external screw thread, the correct order code is : ESDADS – 50 x 30 – B

## Dimensions

ESDAD  
φ12-16



ESDADS  
φ20-100



型式/ Type	不带磁环 Without magnetic ring		带磁环 S: With magnetic ring				E		O	H	I	U	
	符号 Code	A	C	A	C	B	D	行程/Stroke≤10					行程/Stroke>10
12		37	27	37	27	5	25	6	6	M5×0.8	M5×0.8	6.5	4.2
16		39.5	28.5	39.5	28.5	5.5	29	6	6	M5×0.8	M5×0.8	6.5	4.2
20		40.5	29.5	40.5	29.5	5.5	34	7	8	M5×0.8	M5×0.8	6.5	4.2
25		43	31	43	31	6	40	7	10	M5×0.8	M6×1	8.2	4.6
32		48.5	34.5	48.5	34.5	7	44	8	12	G1/8	M6×1	8.2	4.6
40		50	36	50	36	7	52	9	12	G1/8	M8×1.25	10	6.5
50		56	38	56	38	9	62	11	15	G1/4	M8×1.25	11	6.5
63		60	42	60	42	9	75	11	15	G1/4	M8×1.25	11	6.5
80		73	51	73	51	11	94	14	23	G3/8	M12×1.75	14	9.2
100		85	61	85	61	12	114	18	23	G3/8	M14×2	17.5	11.3

缸径 Inner Dia.	符号 Code	K	Q	P	L	G	T	J	R	T2	N	N1	S
12	M3×0.5	16.2	5	10.2	6	12	4.5	-	23	6.3	6	-	-
16	M3×0.5	19.8	5	11	6	12	4.5	-	28	7.3	6.5	-	-
20	M4×0.7	24	6	15	8	14	4.5	10	-	7.5	-	36	-
25	M5×0.8	28	8	17	10	15	5.5	10	-	8	-	42	-
32	M6×1	34	10	22	12	16	5.5	15	-	9	-	50	-
40	M8×1.25	40	14	28	16	20	7.5	16	-	10	-	58.5	-
50	M10×1.5	48	17	38	20	25	8.5	20	-	10.5	-	71.5	-
63	M10×1.5	60	17	40	20	25	8.5	20	-	11.8	-	84.5	-
80	M14×1.5	74	22	45	25	25	10.5	26	-	14.5	-	104	-
100	M18×1.5	90	22	55	25	30	13	26	-	18	-	124	-